



**STANDARD FEATURES:**

- Ball bearings
- High starting torque
- Precision die cast end bells
- Class B rated
- Reversible
- Stainless steel output shafts

**OPTIONAL FEATURES:**

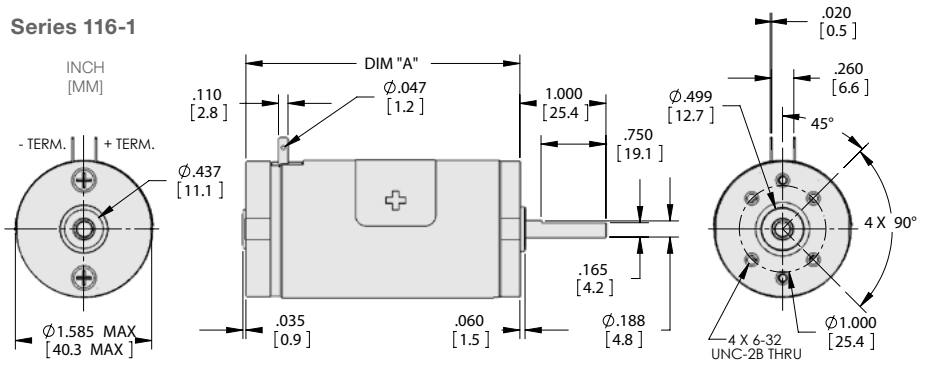
- Encoders up to 2048 CPR
- Voltage ranges to 48VDC
- EMI noise suppression
- Customized shafts
- Customized lead harnesses
- Custom mounting
- Rear shaft extensions
- Integral lead wires
- Gearboxes
  - Planetary  
Ratios up to 2653:1  
(See Series 116-8, 116-9)
  - Spur  
12:1; 48:1; 192:1; 768:1  
(See Series 116-4)

**TYPICAL APPLICATIONS:**

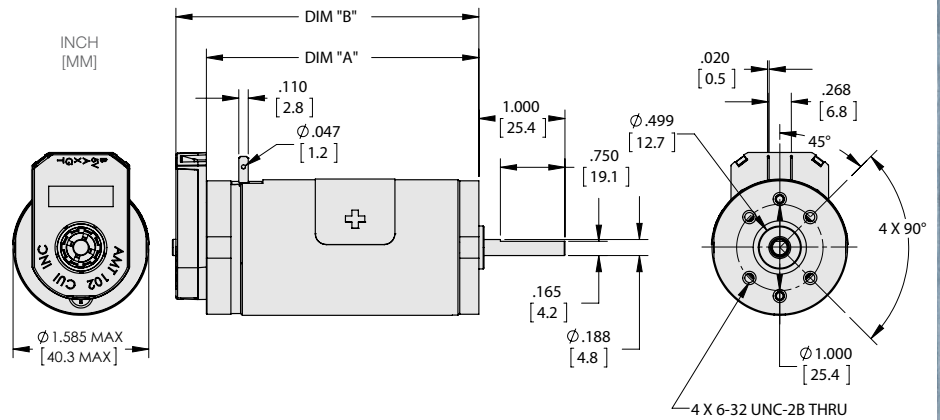
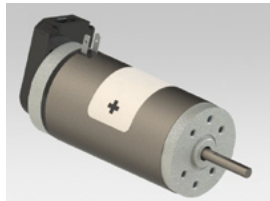
- Printers
- Plotters
- Pumps
- Fans
- Cutting Tools
- Medical Devices
- Robotics
- Beverage Dispensing
- Gaming/Recreational Machines



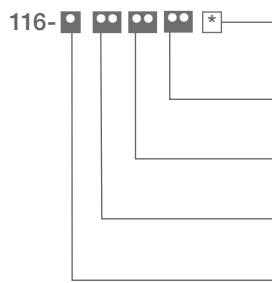
**Series 116-1**



**Series 116 with Encoder**



**Series 116**  
**Part Numbering**  
**Example**



**ENCODER OPTION C, D, OR M**  
Counts Per Revolution (CPR) (C =100, D = 500 or M = 1000)  
(Others Are Available - See Factory)  
\*\*\*Otherwise Leave Blank\*\*\*

**Overall Motor Length**  
(27 or 32) (e.g. 27 = 2.7 Inches Max.)

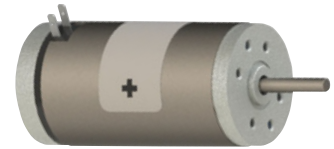
**Motor Speed**  
(16, 32, or 48) (e.g. 32 = 3200 RPM)

**Rated Voltage**  
(12 or 24)

**Motor Type:**  
1 = Motor Only, Terminals, Encoder Optional  
2 = Motor Only, Integral Leads, Encoder Optional

# Series 116-1

## 1.6" DC Motor



### PERFORMANCE

PART NUMBER	VOLTS NOM	NO LOAD SPEED	NO LOAD CURRENT	LOAD SPEED	LOAD TORQUE	LOAD CURRENT	STALL TORQUE	STALL CURRENT	TERMINAL RESISTANCE	BACK EMF CONSTANT	TORQUE CONSTANT	DIM "A" MAX INCH [mm]	DIM "B" MAX INCH [mm]				
		WNL	INL	W	TL	IL	Ts	Is	RT	KE	KT						
		RPM	AMPS	RPM	IN-OZ	AMPS	IN-OZ	AMPS	OHMS	V / KRPM	IN-OZ / A						
		NOM.	MAX.	NOM.	REF.	MAX.	REF.	REF.	NOM.	NOM.	NOM.						
116-1121627	12	2800	0.2	1700	8	1.7	20	3.7	3.4	4.2	5.7	2.75 [70]	3.10 [79]				
116-1123227		4000	0.3	3100	7	2.2	31	8.4	1.7	2.9	3.9						
116-1124827		5700	0.4	4700	6	2.8	34	13.3	0.7	2.0	2.7						
116-1241627	24	2800	0.1	1800	8	0.9	22	2.1	11.8	8.3	11.2			3.20 [82]	3.55 [91]		
116-1243227		4100	0.1	3300	7	1.2	32	4.6	5.2	5.6	7.6						
116-1244827		5700	0.2	5100	6	1.5	44	9.1	2.6	4.0	5.3						
116-1121632	12	2300	0.2	1800	11	2.1	37	6.1	3.0	4.6	6.3					3.20 [82]	3.55 [91]
116-1123232		3600	0.4	3400	10	3.2	63	16.7	1.0	2.8	3.8						
116-1124832		5600	0.5	4800	9	3.9	66	24	0.7	2.1	2.8						
116-1241632	24	2500	0.1	1800	11	1.0	38	3.1	8.2	9.3	12.5	3.20 [82]	3.55 [91]				
116-1243232		4100	0.2	3500	10	1.6	55	7.5	3.4	5.6	7.6						
116-1244832		5700	0.3	4900	9	2.0	70	12.7	1.9	4.2	5.7						

For Integral Leads, Replace 116-1 with 116-2.

For Encoder, Add C, D, or M to end of part number. (C=100 CPR, D=500 & M=1000)

### SERIES 116-2 WITH INTEGRAL LEADS

