



**STANDARD FEATURES:**

- Ball bearings
- High starting torque
- Precision die cast end bells
- Class B rated
- Reversible
- Stainless steel output shafts

**OPTIONAL FEATURES:**

- Encoders up to 2048 CPR
- Voltage ranges to 48VDC
- EMI noise suppression
- Customized shafts
- Customized lead harnesses
- Custom mounting
- Rear shaft extensions
- Gearboxes

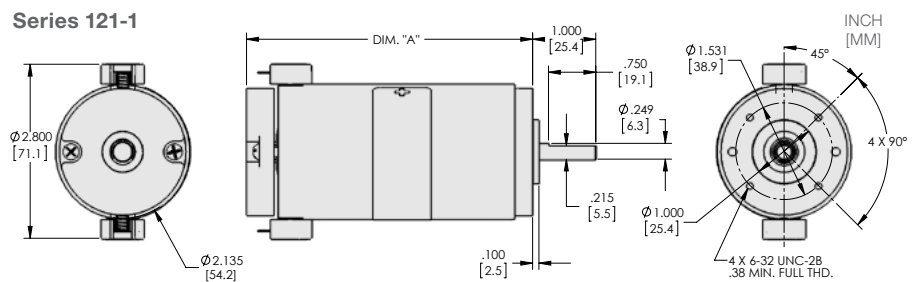
- Planetary  
Ratios up to 2653:1  
(See Series 121-8, 121-9)
- Spur  
12:1; 48:1; 192:1; 768:1  
(See Series 121-4)

**TYPICAL APPLICATIONS:**

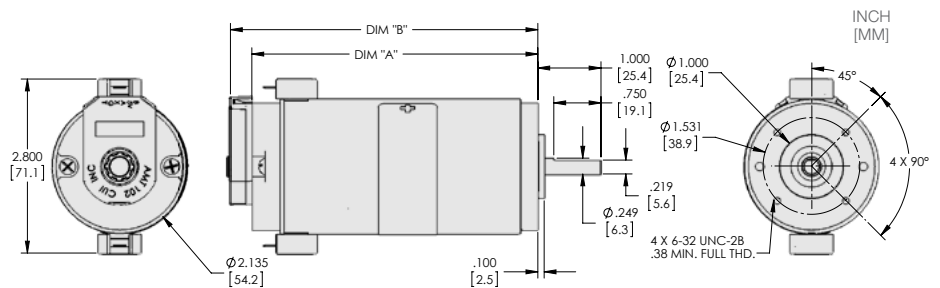
- Printers
- Plotters
- Pumps
- Fans
- Cutting Tools
- Medical Devices
- Robotics
- Beverage Dispensing
- Gaming/Recreational Machines



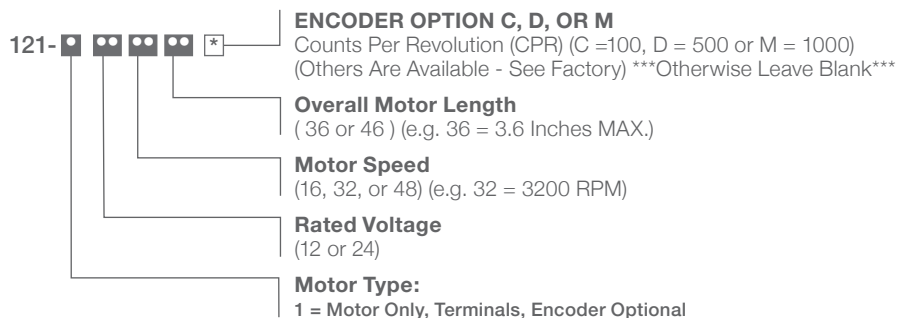
**Series 121-1**



**Series 121-1 with Encoder**



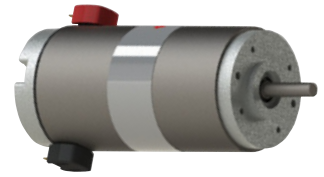
**Series 121**  
**Part Numbering**  
**Example**



# Series 121-1

## 2.1" DC Motor

Continued



### PERFORMANCE

PART NUMBER	VOLTS NOM	NO LOAD SPEED	NO LOAD CURRENT	LOAD SPEED	LOAD TORQUE	LOAD CURRENT	STALL TORQUE	STALL CURRENT	TERMINAL RESISTANCE	BACK EMF CONSTANT	TORQUE CONSTANT	DIM "A" MAX INCH [mm]	DIM "B" MAX INCH [mm]		
		WNL	INL	W	TL	IL	Ts	Is	RT	KE	KT				
		R.P.M.	AMPS	R.P.M.	IN-OZ	AMPS	IN-OZ	AMPS	OHMS	V / KRPM	IN-OZ / A				
		NOM.	MAX.	NOM.	REF.	MAX.	REF.	REF.	NOM.	NOM.	NOM.				
121-1121636	12	2100	0.5	1400	22	3.9	60	9	1.6	5.2	7	3.6 [92]	4.0 [102]		
121-1123236		3600	0.9	2900	15	4.9	74	19	1.1	3.1	4.1				
121-1124836		5100	1.2	4600	11	5.4	79	28	0.9	2.1	2.9				
121-1241636	24	2200	0.2	1500	22	1.9	64	5	4.9	10.6	14.4			4.6 [117]	5.0 [127]
121-1243236		3700	0.4	3000	17	2.7	90	12	2.2	6.3	8.4				
121-1244836		5500	0.7	4800	13	3.1	107	20	1.2	4.3	5.9				
121-1121646	12	2000	0.5	1500	28	4.6	105	15	1.1	5.7	7.7	4.6 [117]	5.0 [127]		
121-1123246		3500	0.9	2900	20	5.9	110	26	0.5	3.2	4.3				
121-1124846		4800	1.2	4300	13	5.9	96	32	0.9	2.3	3.1				
121-1241646	24	2000	0.3	1600	29	2.4	125	9	2.9	11.4	15.5			4.6 [117]	5.0 [127]
121-1243246		3600	0.4	2900	27	3.9	158	19	1.3	6.6	8.9				
121-1244846		5200	0.7	4600	24	5.3	183	33	0.8	4.5	6.1				

For Encoder, Add C, D, or M to end of part number. (C=100 CPR, D=500 & M=1000)