



STANDARD FEATURES:

- 25mm step motor
- Rigid construction
- Sleeve bearing
- Maximum torque output of 40 in-oz continuous or 80 in-oz Intermittently
- Shallow pear-shaped gearbox

OPTIONAL FEATURES:

- Voltages up to 24V
- Custom leads and terminations
- Custom stepper motor outputs
- Nearly 3000 unique gear ratios are available from 5.3:1 to 72000:1

TYPICAL APPLICATIONS:

- Medical Devices
- Instrument Control
- HVAC Control
- ATM Machine
- Robotic Controls
- Lighting Controls
- Voting Machine
- Sun Tracker
- Beverage Dispensing
- Video Games/Gaming Machine
- POP Displays

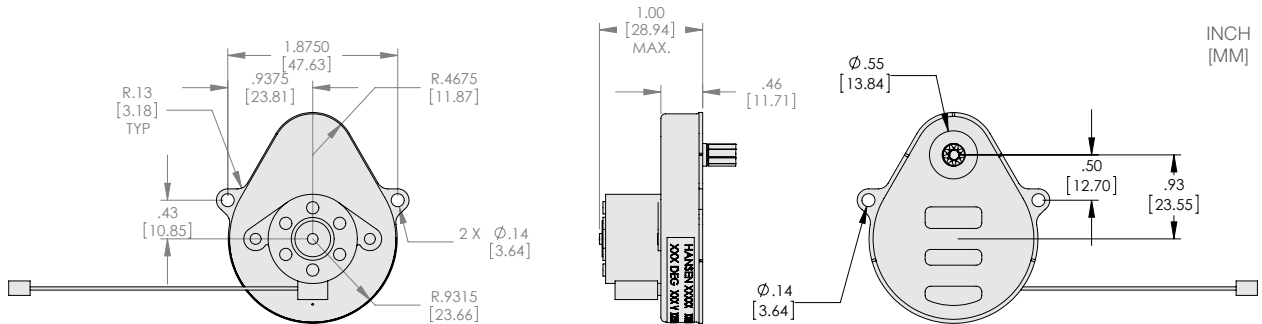


Series 125
Shallow Pear Model



Series 125 Deep Pear
Model

Series 125-2



**Series 125
Part Numbering
Example**



Gear Ratio
(5, 30, 100, 150, ... e.g. 012 = 12:1, 100 = 100:1)

Wattage/Driver Type
DC: 1 = Bipolar
AC: 0 = 1W

Motor Speed/Step Angle
AC: 3 = 300 RPM | 6 = 600 RPM
DC: 5 = 15 Degrees | 7 = 7.5 Degrees

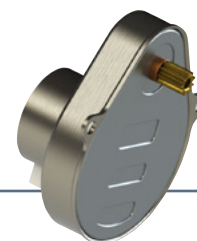
Rated Voltage
2 = 24VDC, 4 = 24VAC/60Hz

Motor Type
2 = Motor + C Mount Gearbox - Shallow
3 = Motor + P Mount Gearbox - Deep
6 = Motor + Heavy Duty C Mount Gearbox

Series 125-2, 3, 6

Size 25 Step Gear Motor

Continued



125 STEP GEAR MOTOR AC PERFORMANCE

MOTOR PART NUMBER	VOLTAGE VAC	VOLTAGE TYPE AC/DC	FREQUENCY HZ	STEP ANGLE (°)	INPUT POWER W	SPEED RPM	GEAR RATIO	CONTINUOUS TORQUE IN-OZ	INTERMITTANT TORQUE IN-OZ
125-2460060	24	AC	60	15	1	10 RPM	60	8	16
125-2460100	24	AC	60	15	1	6 RPM	100	14	29
125-2460150	24	AC	60	15	1	4 RPM	150	20	40
125-2460300	24	AC	60	15	1	2 RPM	300	36	72
125-2460600	24	AC	60	15	1	1 RPM	600	31	62
125-6460600	24	AC	60	15	1	1 RPM	600	75	150
125-24601200	24	AC	60	15	1	30 RPH	1200	31	62
125-64601200	24	AC	60	15	1	30 RPH	1200	75	150

125 STEP GEAR MOTOR DC PERFORMANCE

MOTOR PART NUMBER	VOLTAGE VDC	VOLTAGE TYPE AC/DC	DRIVE TYPE	STEP ANGLE (°)	SPEED (RPM) @ 240 PPS	GEAR RATIO	CONTINUOUS TORQUE IN-OZ	INTERMITTANT TORQUE IN-OZ
125-2271050	24	DC	Bipolar	7.5	20	50	7	14
125-2271100	24	DC	Bipolar	7.5	10	100	14	28
125-2271150	24	DC	Bipolar	7.5	6.7	150	20	40
125-2271200	24	DC	Bipolar	7.5	5	200	25	50
125-2271600	24	DC	Bipolar	7.5	1.7	600	25	50
125-6271600	24	DC	Bipolar	7.5	1.7	600	50	100
125-22711200	24	DC	Bipolar	7.5	0.8	1200	25	50
125-62711200	24	DC	Bipolar	7.5	0.8	1200	50	100
125-2251050	24	DC	Bipolar	15	40	50	7	14
125-2251100	24	DC	Bipolar	15	20	100	14	28
125-2251150	24	DC	Bipolar	15	13.3	150	21	42
125-2251200	24	DC	Bipolar	15	10	200	25	50
125-2251600	24	DC	Bipolar	15	3.3	600	31	62
125-6251600	24	DC	Bipolar	15	3.3	600	75	150
125-22511200	24	DC	Bipolar	15	1.7	1200	31	62
125-62511200	24	DC	Bipolar	15	1.7	1200	75	150