



STANDARD FEATURES:

- Reinforced plastic and metal gearing
- Hardened steel output shaft
- Reversible
- Speeds from 2250 to 120 revolutions per hour available

OPTIONAL FEATURES:

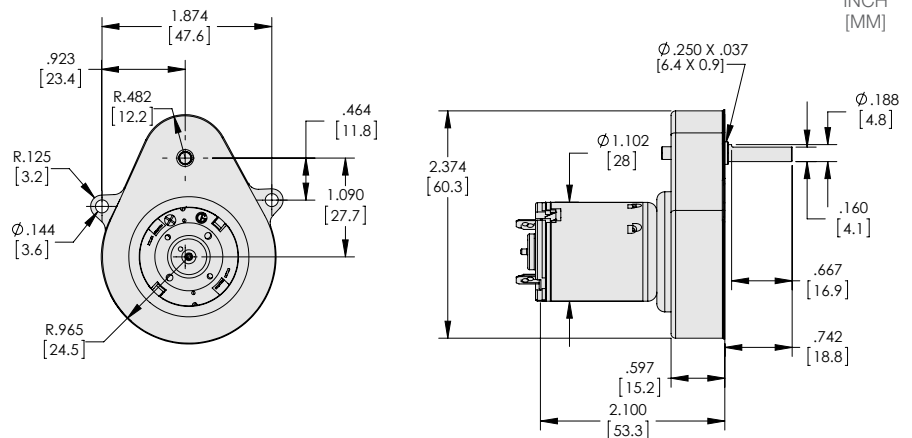
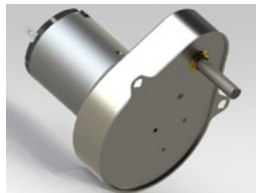
- Customized shafts
- Customized lead harnesses
- Gearboxes
 - PMAC Gearbox (all plastic gears) (Series 148-4)
 - Synchron Gearboxes
 - Round (Type "A" mount) (Series 148-6)
 - Pear (Type "C" mount) (Series 148-5)

TYPICAL APPLICATIONS:

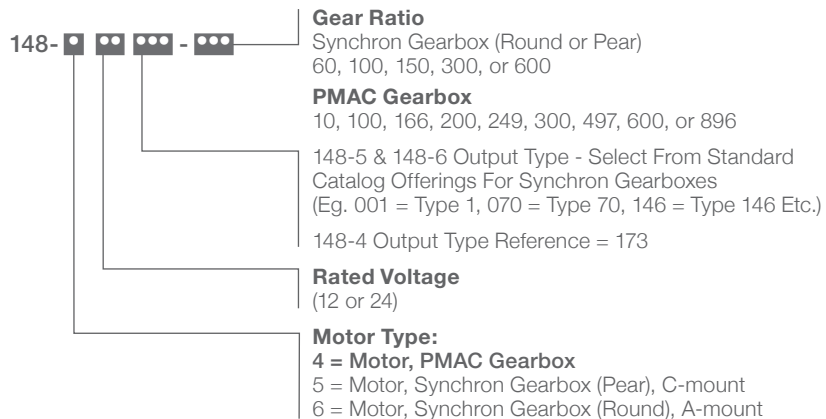
- Cutting Tools
- Medical Devices
- POP Displays
- Rotating Lighting
- Robotics
- Beverage Dispensing
- Gaming/Recreational Machines



Series 148-4



**Series 148
Part Numbering
Example**



Series 148-4

DC Gear Motor (Heavy Duty Gearing)

Continued



PERFORMANCE

PART NUMBER	RATIO	VOLTS NOM	NO LOAD SPEED	NO LOAD CURRENT	LOAD SPEED	LOAD TORQUE	LOAD CURRENT	MAX. THEORETICAL TORQUE (* INDICATES GEARBOX LIMIT)			DIM "A" MAX INCH [mm]
			WNL	INL	W	TL	IL	IN-OZ	R.P.M.	AMPS	
			R.P.M.	AMPS	R.P.M.	IN-OZ	AMPS				
			NOM.	MAX.	NOM.	REF.	MAX.	REF.	REF.	REF.	
148-412173-10	10:1	12	345	0.06	50	4	0.20	4.7	STALL	0.2	2.100 [53.3]
148-412173-100	100:1		35	0.06	25	10	0.10	20*	16	0.2	
148-412173-166	166:1		20	0.06	12	26	0.11	52*	4	0.2	
148-412173-200	200:1		17	0.06	11	26	0.10	52*	5	0.2	
148-412173-249	249:1		14	0.06	10	28	0.09	56*	6	0.2	
148-412173-300	300:1		11	0.06	9	28	0.09	56*	6	0.2	
148-412173-497	497:1		7	0.06	5	38	0.08	76*	4	0.2	
148-412173-600	600:1		6	0.06	5	38	0.08	76*	4	0.1	
148-412173-896	896:1		4	0.06	3	38	0.07	76*	2	0.1	
148-424173-10	10:1		24	690	0.06	395	4	0.20	9.4*	STALL	
148-424173-100	100:1	70		0.06	60	10	0.10	20*	50	0.2	
148-424173-166	166:1	40		0.06	32	26	0.11	52*	24	0.2	
148-424173-200	200:1	34		0.06	28	26	0.10	52*	23	0.2	
148-424173-249	249:1	28		0.06	24	28	0.09	56*	19	0.2	
148-424173-300	300:1	23		0.06	20	28	0.09	56*	17	0.2	
148-424173-497	497:1	14		0.06	12	38	0.08	76*	11	0.2	
148-424173-600	600:1	12		0.06	10	38	0.08	76*	9	0.1	
148-424173-896	896:1	8		0.06	7	38	0.07	76*	6	0.1	